

# Going to National PEKE Centre





Fiona



Amelia



Marianne

When I go to National PEKE Centre I  
will go to see .....



When I go to National PEKE Centre I go with \_\_\_\_\_ .





National PEKE Centre is located in the Sandhurst Shopping Centre. Coles is also in the shopping centre.



I will see shops and cafes.



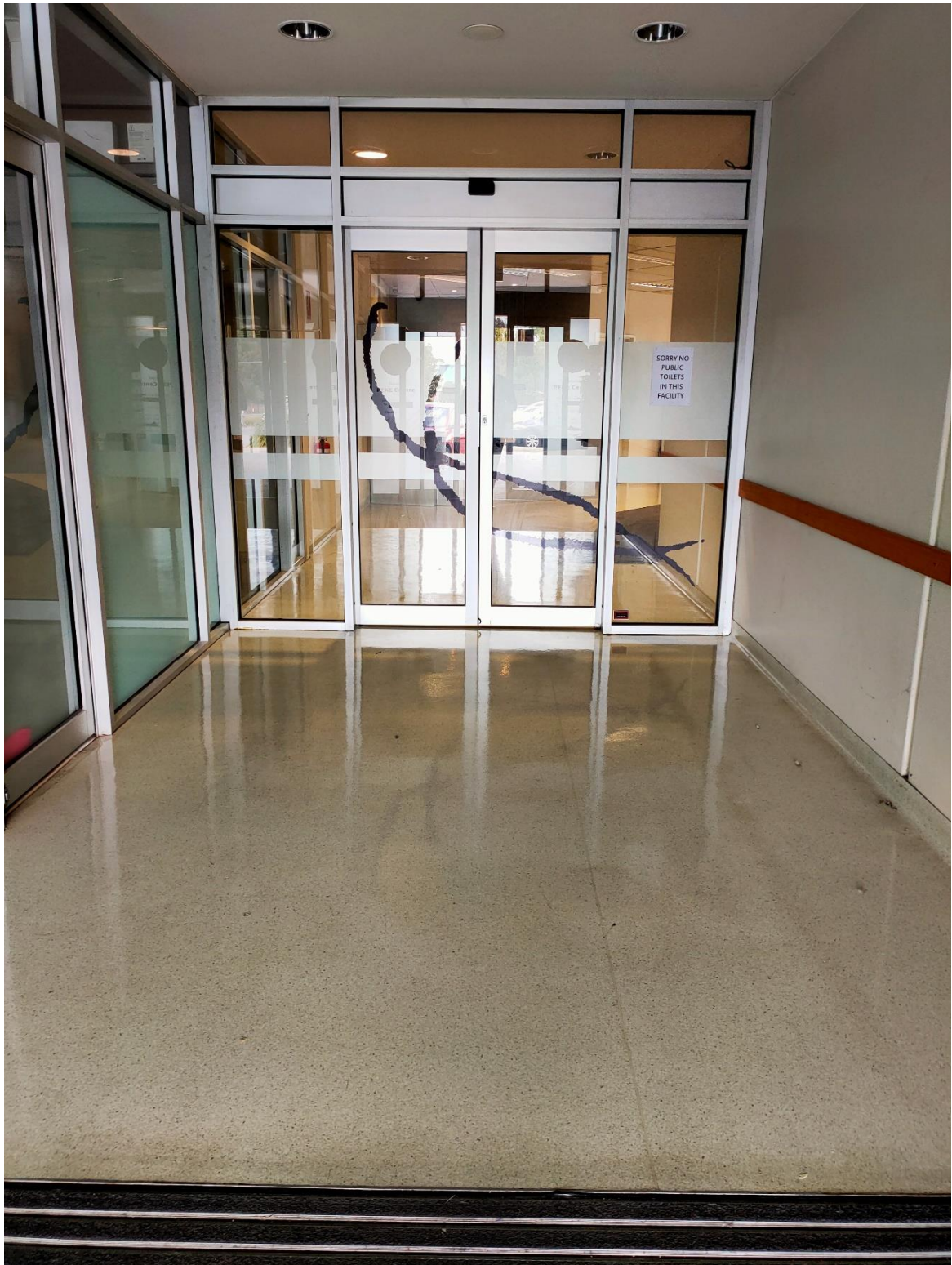


This is the sign and door into National PEKE Centre.



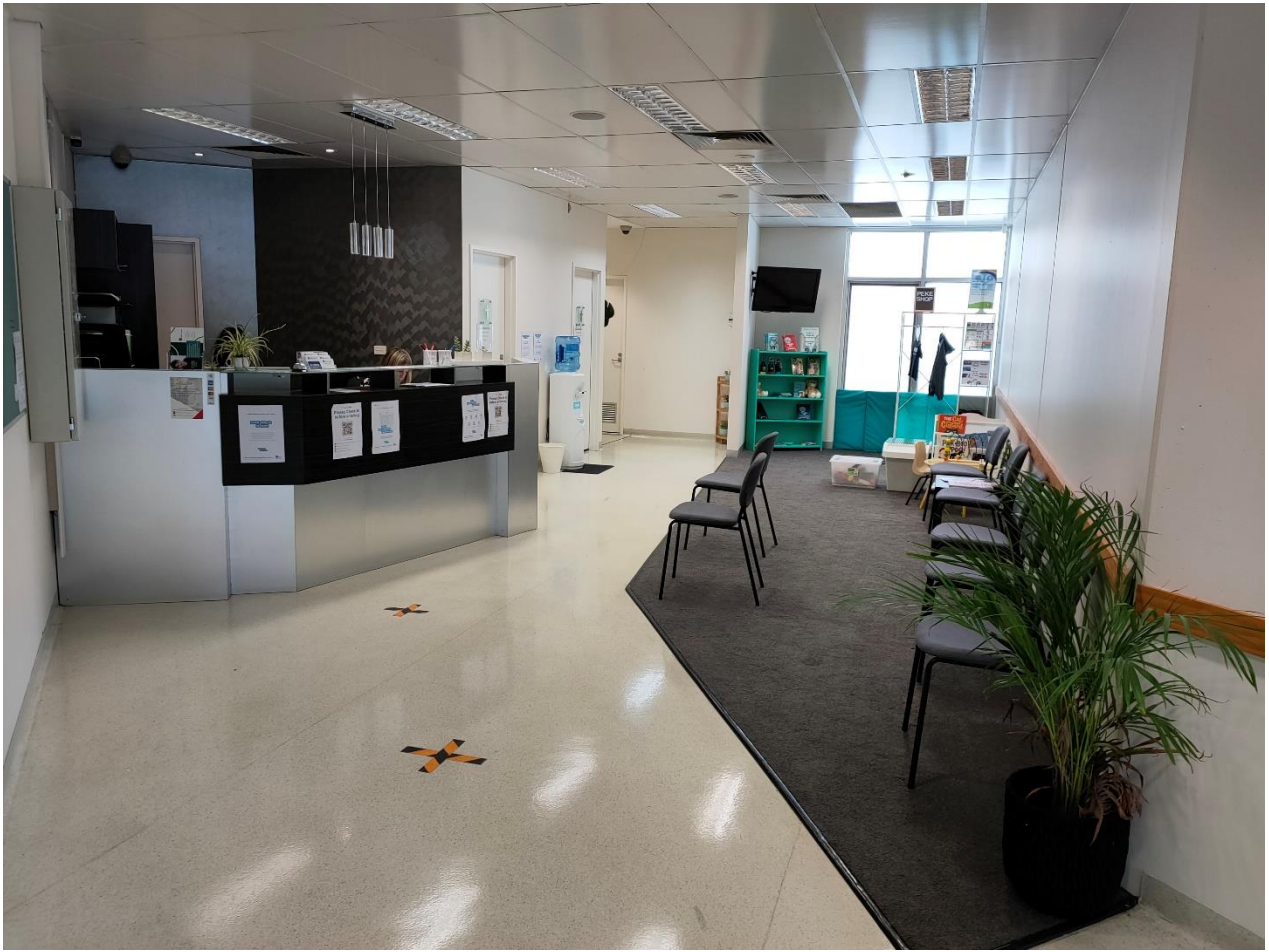
I walk through the first automatic sliding doors.



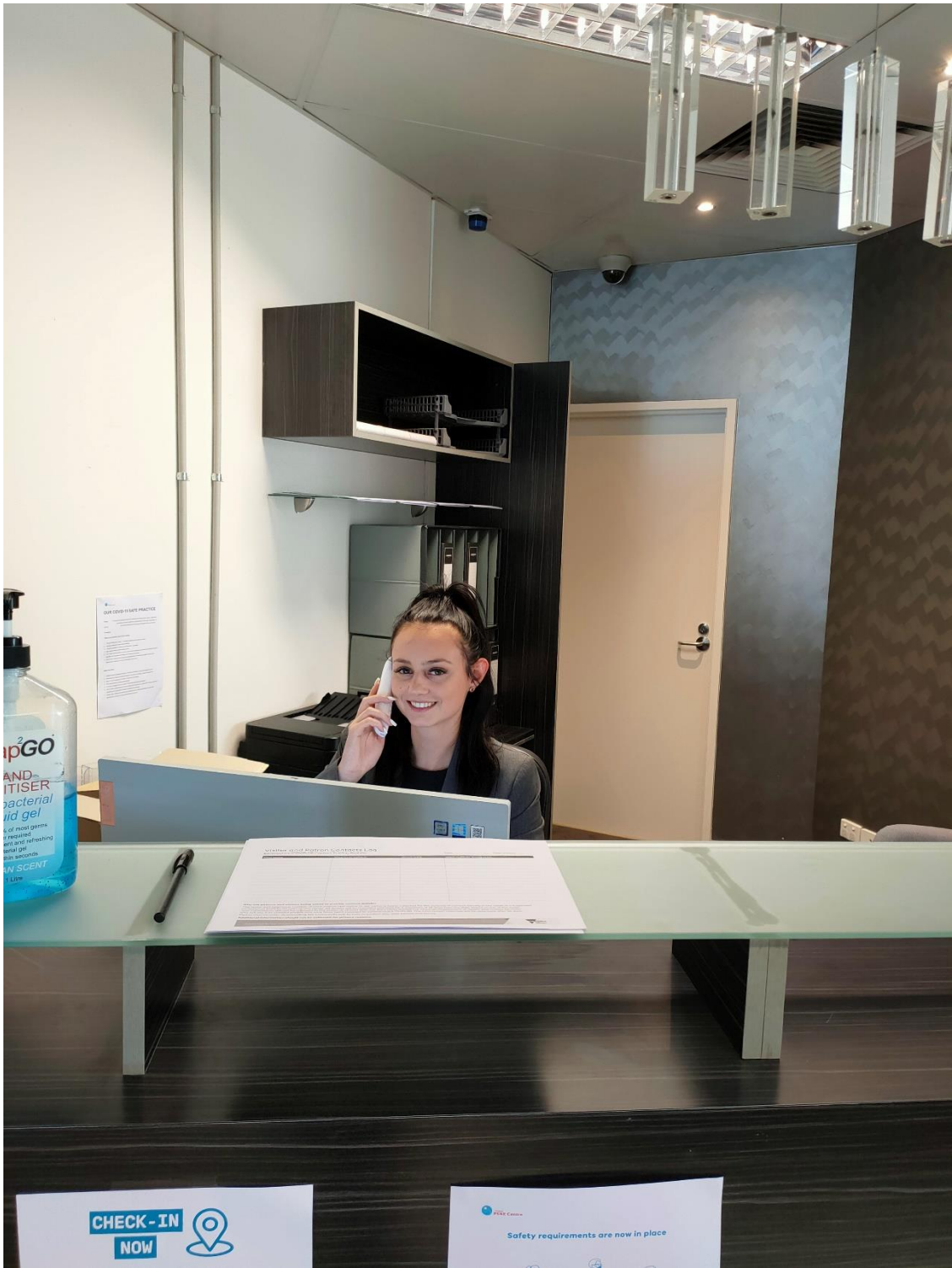


I walk through the second automatic doors.





This is the foyer. I can see a tall desk, some chairs and a play area.



The receptionist greets us with a smile. \_\_\_\_\_ will sign in.





While I wait, I could play with some toys or read a book.



When I am sitting on the chair, I can see the toilets and the water cooler.





..... comes to meet us  
and walks us to their room where we  
will have fun and do activities!



This is the hallway to their room.

Look at the sensory path. It looks like fun!

I can give it a go.





Here are some fun activities I might do.  
I might do some drawing or writing.



I might roll on a squishy ball.





I might play with clay, move my body, dress up and act out a scene or paint.



I might make sounds, sing, listen to music or play with instruments.





Sometimes, \_\_\_\_\_ may  
have a chat with .....  
while I wait and do activity.



When we finish, we return to the foyer.





\_\_\_\_\_ will sign out  
before we leave.



I had fun at National PEKE Centre with

.....

## **Instructions**

- Download or print this social story before visiting National PEKE Centre for the first time.
- The solid blank lines are where you fill in the name of who will be taking the child, teen, young adult or adult to the appointment.
- The dotted blank lines are where you fill in the name of the practitioner the appointment is with.
- Read through this story several times (once a day for a few days) leading up to your appointment.
- It might help to bring the social story in the car and into the appointment.
- This will help reduce anxiety and increase predictability.
- Please let our staff know (in advance) if further visual supports would facilitate your visit to National PEKE Centre.



